

GSP LICORN



GSP LICORN

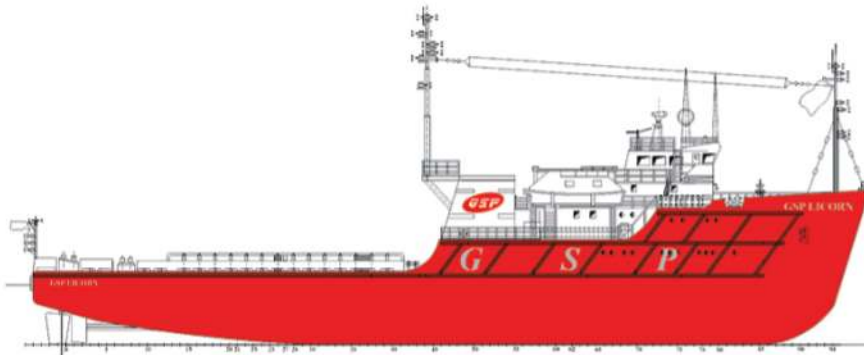
PSV VESSEL •

www.gspholding.com





GENERAL



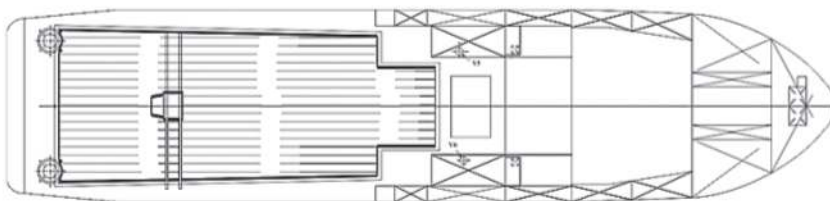
OUTBOARD PROFILE



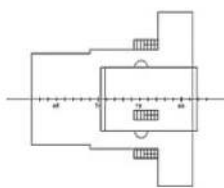
VIEW UNDER MAIN DECK



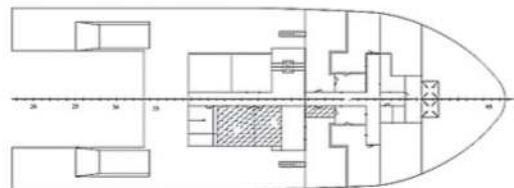
DOUBLE BOTTOM VIEW



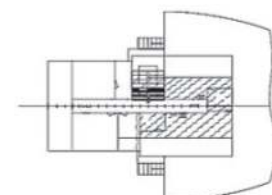
MAIN DECK



BRIDGE DECK



BOAT DECK



FORECASTLE DECK

BUILT BY / YEAR
Braila Shipyard / 1995

FLAG
Malta

TYPE
Supply Vessel

DESIGN
Icepronav Galati

CLASSIFICATION
BV - I • HULL • MACH
Supply Vessel - Tug
Unrestricted Navigation

L.O.A. (m)
60.9

BREADTH (m)
13.6

DEPTH (m)
5.45

MAX. DRAUGHT (m)
4.5

DEAD WEIGHT (mt)
1,090

MAX. SPEED
11 knots (app) 10 tons

NUMBER OF ENGINES & TYPE
2 x 12R251 FMA

GENERATORS
3 X 396 kW type D2842 LE

BOW THRUSTER (s)
FU45LTC - 1225 - 210 kW

TECHNICAL DATA

MAIN PARTICULARS

L.O.A.:	60.9 m
LPP:	56.37 m
Breadth Moulded:	13.6 m
Draft:	4.5 m
DWT:	1,090 mt
GRT:	1,289 t
Net Tonnage:	386 t

CARGO CAPACITIES

Deck Area:	210 m ²
Deck Cargo:	460 mt
Deck Load:	3.4 mt / m ²
Fuel:	281 mt
Potable Water:	361.31 t
Dry Bulk (4 tanks):	60 cubm

DISCHARGE CAPACITIES

Fuel:	40 t / h – 5 bar
Potable Water:	60 t / h – 5 bar
Dry Bulk Compressors:	2 x 45 cubm / h – 3 bar

DECK MACHINERY / MOORING

Tugger Winches:	2 x Anchor Electric Capstans – 10 m / min., 8 / 16 / 16 kW
Capstans:	2 x Electric Capstans 14 m / min., 8 / 16 / 16 kW
Anchors:	2 x 1,700 Hall Anchor
Chain:	2 x 275 m, 38 mm

TOWING / ANCHOR HANDLING EQUIPMENT

Winch Type:	Hydraulic 1 x 70 tf
Tow Line:	1 x 700 m, 64 mm

MACHINERY & PROPULSION

Main Engines:	ALCO Resita, 2 x 2,465 BHP, total 4,800 BHP
Aux. Engines:	DEMP, 3 x 396 kW, 400 V, 50 Hz
Emergency Generator:	1 x 6 V D 21 / 15 – 2 122 kW, 400 V, 50 Hz
Main Propellers:	2 x in Nozzle 4 blade FPP 2,410 mm diameter
Bow Thruster:	1 x 210 kW tunnel
Rudders:	2 x Spade

NAVIGATION & COMMUNICATION EQUIPMENT

Radars:	SEATRACK SC 1204 / SPERRY BM 251 EXBAND GMDSS
Main Radio:	
Inmarsat C:	
E-mail:	FLEET 77

GPS:	PHILIPS NAVIGATOR / FURUNO GP 32
Autopilot:	Sperry
Gyro:	Sperry

PERFORMANCE

Bollard Pull:	36 tf
Max. Speed:	11 knots
Consumption per day:	Sailing 7.5 knots – 7.5 t; Max. Speed 12 knots – 10 t; Towing – 14.5 t; Standby – 5 t

ACCOMMODATION

Total Capacity:	35 persons
Cabins:	3 cabins x 1 person, 10 cabins x 2 persons, 3 cabins x 4 persons
Hospital:	no
Lounges:	1



	TANK CAPACITIES								
	SG m ³	FUEL OIL 0,835	POT WATER 1,000	DRILL WATER 1,000	BALLAST WATER 1,025	LIQUID MUD 2,000	BRINE 2,200	GLYCOL 0,830	DRY BULK 2,400
TK 1.1 FOREPEAK	76.2	-	-	-	78.11	-	-	-	-
TK 1.10 PS	15.4	-	15.4	-	-	-	-	-	-
TK 1.11 SB	15.4	-	15.4	-	-	-	-	-	-
TK 1.12 C-PS	42	-	42	-	-	-	-	-	-
TK 1.13 C-SB	42	-	42	-	-	-	-	-	-
TK 1.14 PS	16.7	-	16.7	-	-	-	-	-	-
TK 1.15 SB	16.7	-	16.7	-	-	-	-	-	-
TK 1.16 AFT PEAK	23	-	-	-	23.58	-	-	-	-
TK 1.17 PS	23.8	-	-	-	24.40	-	-	-	-
TK 1.18 PS	23.8	-	-	-	24.40	-	-	-	-
TK 1.2 PS	33.4	-	-	-	34.24	-	-	-	-
TK 1.3 SB	33.4	-	-	-	34.24	-	-	-	-
TK 1.4 C-PS	44.4	-	44.4	-	-	-	-	-	-
TK 1.5 C-SB	41.7	-	41.7	-	-	-	-	-	-
TK 1.6 PS	34	-	34	-	-	-	-	-	-
TK 1.7 SB	23.4	-	23.4	-	-	-	-	-	-
TK 1.8 C-PS	26.2	-	26.2	-	-	-	-	-	-
TK 1.9 C-SB	27	-	27	-	-	-	-	-	-
TK 2.1 PS	9.8	8,183	-	-	-	-	-	-	-
TK 2.2 SB	9.8	8,183	-	-	-	-	-	-	-
TK 2.3 PS	9.8	8,183	-	-	-	-	-	-	-
TK 2.4 SB	9.8	8,183	-	-	-	-	-	-	-
TK 2.12 SB	6	5,01	-	-	-	-	-	-	-
TK 2.5 PS	39.6	33,066	-	-	-	-	-	-	-
TK 2.6 SB	39.6	33,066	-	-	-	-	-	-	-
TK 2.7 C	55.8	46,593	-	-	-	-	-	-	-
TK 2.8 C-PS	26	21,71	-	-	-	-	-	-	-
TK 2.9 C-SB	23.6	19,706	-	-	-	-	-	-	-
TK 2.10 PS	53.6	44,756	-	-	-	-	-	-	-
TK 2.11 SB	53.6	44,756	-	-	-	-	-	-	-
TK 3.1 PS	27.1	-	27.1	-	-	-	-	-	-
TK 3.2 SB	27.1	-	27.1	-	-	-	-	-	-
TK 4.1 PS	18.3	-	18.3	-	-	-	-	-	-
TK 4.2 SB	18.3	-	18.3	-	-	-	-	-	-
TK 4.3 PS	15.9	-	15.9	-	-	-	-	-	-
TK 4.4 SB	15.9	-	15.9	-	-	-	-	-	-
TK 4.5 PS	15.7	-	15.7	-	-	-	-	-	-
TK 4.6 SB	15.7	-	15.7	-	-	-	-	-	-
TK 4.7 PS	36.7	-	36.7	-	-	-	-	-	-
TK 4.8 SB	36.7	-	36.7	-	-	-	-	-	-
TK 4.9 C-AFT	88.1	-	88.1	-	-	-	-	-	-
TK 4.10 C-AFT	72.9	-	72.9	-	-	-	-	-	-
TK 4.11 PS	13.2	-	13.2	-	-	-	-	-	-
TK 4.12 SB	13.2	-	13.2	-	-	-	-	-	-
TK DRY BULK 4 CILINDERS	60	-	-	-	-	-	-	-	144
-	-	-	-	-	-	-	-	-	-
TOTAL M ³	1,386	-	-	-	-	-	-	-	-
TOTAL MT	-	281,395	759.7	-	218.94	-	-	-	144

All figures shown, are based on tank volume at 100 % filling.



Constanta Port, Berth 34, 900900, Constanta, Romania

Tel.: +40 24 155 5255 • Fax: +40 24 155 5257

www.gspholding.com