

# GSP PRINCE



**GSP PRINCE**

**IMR & SURVEY VESSEL •**

[www.gspoffshore.com](http://www.gspoffshore.com)



**GRUP SERVICIIL PETROLIERE**

member of UPETROM GROUP



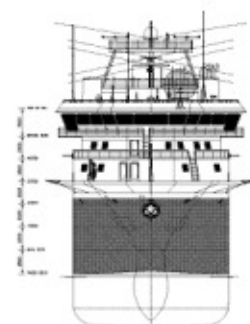
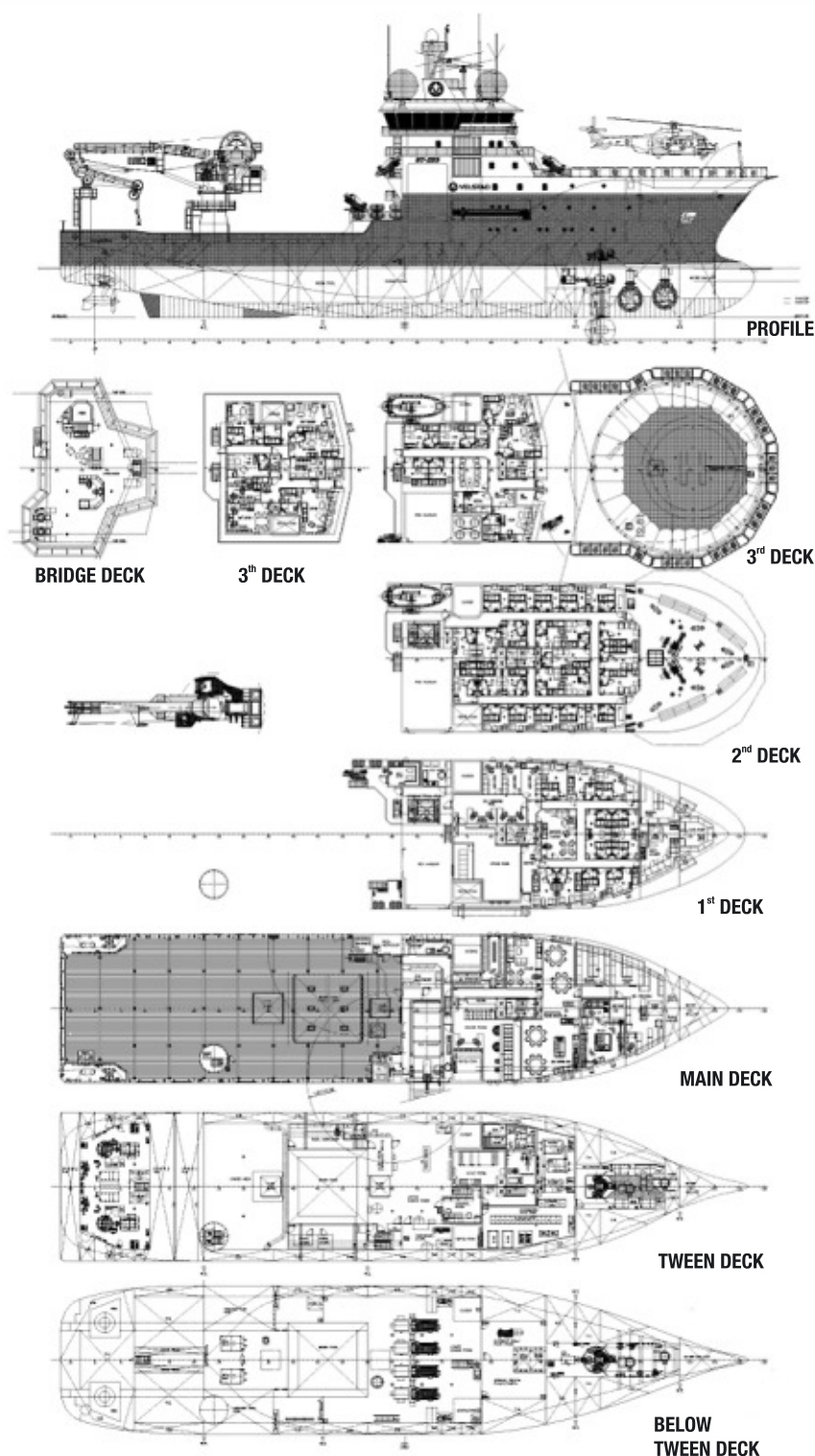
**GRUP SERVICII PETROLIERE**  
member of UPETROM GROUP

## GENERAL

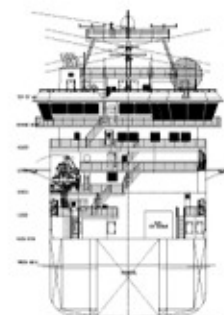
### 85.3 x 18 M IMR & SURVEY VESSEL

#### CLASS

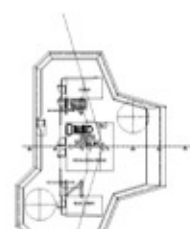
DNV – ✠ 1A1, ICE-C, SF, COMF-V(3)C(3),  
HELDK-SH, E0, DYNPOS-AUTR, NAUT-OSV(A),  
CLEAN, DK(+)



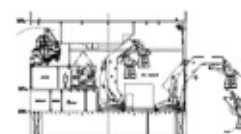
FRONT VIEW



AFT VIEW



WHEELHOUSE TOP



HANGAR



## TECHNICAL DATA



### GENERAL

This vessel, designated ST-253 is a purpose built IMR & Survey Vessel designed by Skipsteknisk AS. The vessel is specially designed for operation under severe weather conditions and with high manoeuvrability and station keeping capabilities.

**The vessel will be outfitted and prepared for the following duties:**

- Inspections, Maintenance, Repairs & Survey
- SAT Diving & ROV Operations
- Subsea Installation Works
- Geotechnical Surveys / Works
- Light Construction Works
- Crane Operations

### MAIN CHARACTERISTICS

L.O.A.:	85.30 m
LPP:	75.00 m
Breadth Moulded:	18.00 m
Max. Draft Approx.:	6.80 m
DWT at SWL / 6.8 m:	approx. 2,200 tons
Deck Area Aft of Hangar:	650 m <sup>2</sup>

### TANK CAPACITIES

Water Ballast:	approx. 2,200 m <sup>3</sup>
Fuel Oil:	approx. 1,100 m <sup>3</sup>
Potable Water:	approx. 430 m <sup>3</sup>

### ANTI-ROLLING TANKS

Three passive anti-rolling tanks

### CLASS

DNV – 1A1, ICE-C, SF, COMF-V(3)C(3), HELDK-SH, EO, DYNPOS-AUTR, NAUT-OSV(A), CLEAN, DK(+)

### SPEED

Max. speed at 6.0 m draft approx.:	16.0 knots
Service speed at 6.0 m draft approx.:	14.0 knots

### ACCOMMODATION

#### Accommodation in total:

- 62 men in single and double cabins
- Messroom with self serving area
- 2 lounges
- Meeting rooms, offices etc. on various decks
- Online room
- Offline room
- Hospital
- Gymnasium
- Helideck reception area
- Wardrobe
- Laundries



**GRUP SERVICII PETROLIERE**  
member of UPETROM GROUP

## TECHNICAL DATA

### MAIN PROPULSION SYSTEM

- Diesel electric propulsion plant
- Two Azimuth thrusters for main propulsion, output of 2.2 MW each, Ø 2,800 mm

### POWER GENERATING PLANT

- 4 x 1,901 kW diesel generator sets, 1,800 rpm
- 1 x 465 kW diesel generator set, 1,800 rpm
- Selective Catalytic Reducers (SCR) installed (NOx reduction)
- Emergency generator as per class

### TUNNEL THRUSTERS / AZIMUTH

- Two electric driven tunnel thruster in bow, each 1,150 kW, Ø 2,200 mm
- One retractable azimuth thruster in bow, 1,400 kW, Ø 2,300 mm

### HELIDECK

- Helideck for Sikorsky S-92
- Rules: CAA CAP437

### MAIN CRANE

- AHC Offshore crane as per "Red book" regulations
- Max. Lift Capacity: 70 t / 11 m
- Max. Outreach: 25 t at 25 m
- Wire Length: 2,000 m
- Hook Speed Fully Loaded: 0 - 30 m / min.
- Hook Speed Light Load: 0 - 50 m / min.
- Aux. Winch: 10 t / 25 m Wire length: 400 m
- Tugger Winches: 2 x 5 t Wire length: 70 m

### DECK EQUIPMENT

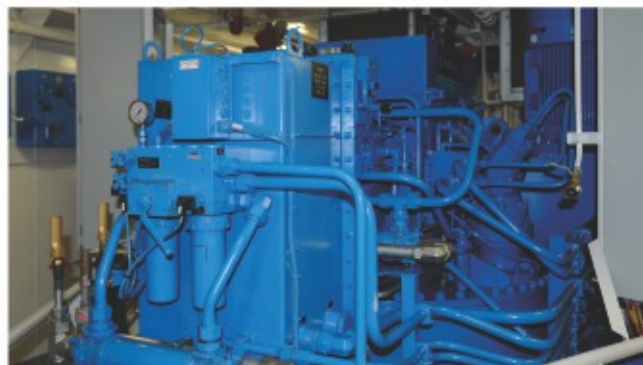
- 2 Aux. Cranes, 1.5 t / 10.3 m
- 1 Tugger Winch, 10 t
- 2 Capstans, each 10 t
- 1 Crane for Provision Handling, 1 t / 15 m

### ROV TYPE

#### TRITON® XLR 125 HP

- Depth Rating: 3,000 msw  
Power: 125 HP  
Through Frame Lift: 2,000 kg max.

Control System ICE™ Real Time Control System with GHz Optical Link, Ethernet Telemetry and Graphical Diagnostics.  
Control Modes Heading, Depth, Altitude and Auto Position™.  
Payload Capacity 150 kg Plus.





## TECHNICAL DATA



### TRITON® XLR 125 HP SPECIFICATIONS

Lenght:	2,780 mm (including manipulators)
Width:	1,500 mm over buoyancy 1,570 over fenders
Height:	1,800 mm
Depth Rating:	3,000 msw
Weight in Air:	3,450 kg
Payload Capacity:	150 Kg
Through Frame Lift:	2,000 kgf
Added aft Load Capacity:	600 kg
Power Pack Options:	125 HP (shaft)
Turning Rate:	40° / s
Thruster Horizontal:	4 x 380 mm Ø
Thruster Vertical:	2 x 380 mm Ø with 1 x 380 mm Ø pitch thruster option
Auto Heading Control:	± 2.0°
Auto Pitch and Roll Control:	± 5.0°
Auto Depth Control:	± 150 mm
Auto Altitude Control:	± 150 mm





**GRUP SERVICII PETROLIERE**  
member of UPETROM GROUP

## TECHNICAL DATA

### DIVING SYSTEM (ON DEMAND)

#### Saturation Diving System

A 12 man portable saturation diving system rated at 300 m and built to IMCA guidelines and classed by ABS and DNV.

The system consists of the following main components:

- 3 man diving bell
- 2 off 6 man twin lock DDC built into a protective frame
- 3 man twin Lock DDC built into a protective frame
- TUP
- 15 man Hyperbaric Rescue Capsule (HRC)
- HRC "flyaway module"
- HRC LARS (davit launch type)
- LARS – A frame type, including bell winch
- Umbilical winch c / w umbilical
- Machinery module – 2 off
- Combined diver / bell / chamber control module
- Workshop container

### NAVIGATION AND RADIO COMMUNICATION

Equipment according to GMDSS regulations, Area 3 and Naut OSV notation.  
SAM-Atlas integrated bridge system.

- Two radars, Three Gyro Compasses
- Auto pilot, DGPS
- Electronic Chart system (ECDIS)
- 2 x Seapath 200
- Calling, Command, Teleph. System + CCTV

### DYNAMIC POSITIONING SYSTEM

- Triple Redundant Dynamic Positioning System (AUTR / DP2)
- 3 x Operator Stations
- 2 HiPAP 500 units
- 2 DGPS
- Laser Fan Beam
- Radius Kongsberg
- 3 x MRU 5 w / voting
- 3 x Wind Sensors w / voting

### SAFETY EQUIPMENT

- Fast Rescue Craft (FRC) MP 741
- According to SOLAS for the specified class and number of crew









**GRUP SERVICII PETROLIERE**

member of UPETROM GROUP

Constanta Port, Berth 34, 900900,  
Constanta, Romania • [office@gspoffshore.com](mailto:office@gspoffshore.com)  
Tel.: +40 24 155 5255 • Fax: +40 24 155 5257

[www.gspoffshore.com](http://www.gspoffshore.com)