

GSP ALCOR



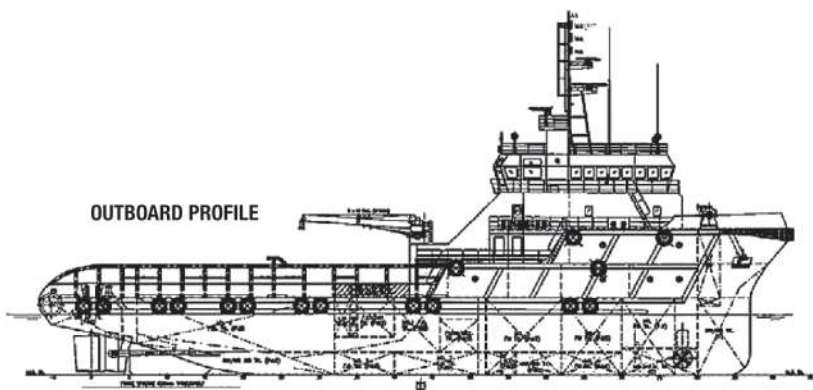
GSP ALCOR
AHTS VESSEL •

www.gspholding.com

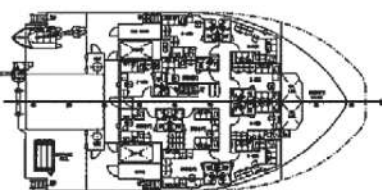


GENERAL

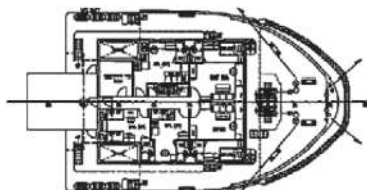
OUTBOARD PROFILE



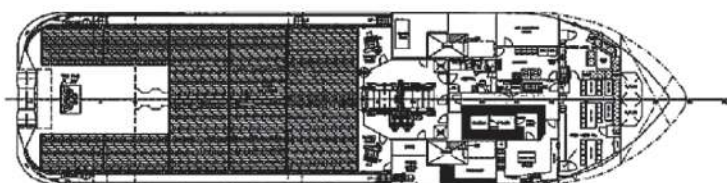
FORECASTLE DECK



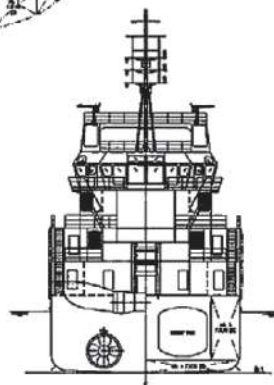
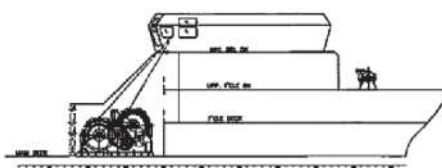
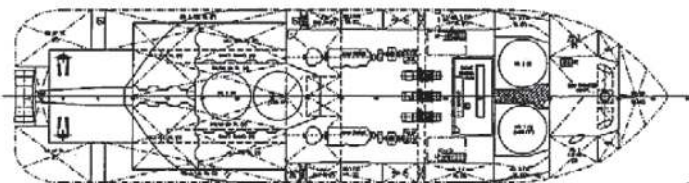
UPPER FORECASTLE DECK



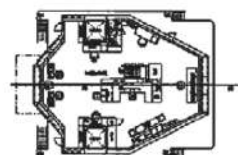
MAIN DECK PLAN



BELOW DECK PLAN



BRIDGE DECK PLAN



BUILT BY / YEAR

Fujian China / 2010

FLAG

Singapore

TYPE

AHTS

DESIGN

Anchor Handling Supply Vessel

CLASSIFICATION SOCIETY

ABS

CLASS

ABS – ⚙️ A1, Towing Vessel, Fire Fighting Vessel Class 1, Offshore Support Vessel, ⚙️ AMS, ⚙️ DPS-1

L.O.A. (m)

59,250

BREADTH (m)

14,950

DEPTH (m)

6,100

MAX. DRAUGHT (m)

4.95

SPEED (economical)

11 knots

NUMBER OF ENGINES & TYPE

2 x 2,575 BHP

GENERATORS

3 x 350 kW @ 1,500 rpm / 415 V / 3 Ph / 50 Hz Caterpillar C18
1 x 80 kW @ 1,800 rpm / 415 V / 3 Ph / 50 Hz / Caterpillar C4.4
DITA, emergency generator

BOW THRUSTER (s)

1 x 325 kw electric-driven (Kawasaki / KT -55B3) tunnel type (CPP); 6 t thrust

TECHNICAL DATA

MAIN PARTICULARS

L.O.A.:	59.25 m
Breadth Moulded:	14.95 m
Draft:	4.95 m
DWT:	1,400 mt
GRT:	1,678 / 503 t

CARGO CAPACITIES

Deck Area:	350 m ²
Deck Cargo:	500 tons
Deck Load:	7.5 mt / m ² uniform loading
Fuel:	600 cubm
Fresh Water:	500 cubm
Drill Water:	400 cubm
Liquid Mud:	350 cubm
Dry Bulk / Cement Tank:	187 cubm (4 x 1,650 ft ³)
Freezer / Chiller:	10 cubm / 10 cubm
Foam / Detergent:	12 cubm / 12 cubm

DISCHARGE CAPACITIES

Fuel:	1 x 150 cubm / h
Fresh Water:	1 x 125 cubm / h
Drill Water:	1 x 100 cubm / h
Liquid Mud:	1 x 70 cubm
Dry Bulk:	2 x 13 cubm / min.

DECK MACHINERY / MOORING

Tugger Winches:	2 x 10 mt @ 10 m / min. electro-hydraulic
Capstans:	2 x 5 mt @ 15 m / min. electro-hydraulic
Deck Cranes:	Drum Capacity: 250 m (L) x 22 mm (diameter) SWR Deck Crane 1 x 3T @ 9 m foldable type
Chain:	220 m (L) x 36 mm (Ø) Grade U2 (each side)

TOWING / ANCHOR HANDLING EQUIPMENT

Towing Wire:	1,000 m x 56 mm diameter
Spare Towing Wire:	1,000 m x 56 mm diameter
Anchor Handling Wire:	1,000 m x 56 mm diameter
Anchor Windlass:	1 x electro-hydraulic Mentrade suit' for 36 mm (Ø) chains, rated pull 9 mt @ 12 m / min.
Gypsies:	
Warping Drum:	400 mm (diameter) x 450 mm (L) rated pull 7.5 mt @ 8.5 m / min.
Bow Anchors:	2 x 1,305 kg high holding power anchors

Chains:	220 m (L) x 36 mm (Ø) Grade U2 (each side)
Capstans:	2 x 5 mt @ 15 m / min. electro-hydraulic
Tugger Winch:	2 x 10 mt @ 10 m / min. electro-hydraulic
Towing / A H Winch:	1 x electro-hydraulic double drum; (Mentrade AHTW 150T)
Line Pull:	150 mt @ 0— 6 m / min. @ 1 st layer (low speed) 71 mt @ 0— 12 m / min. @ 1 st layer (med speed) 23.5 mt @ 36 m / min. @ 1 st layer (high speed)
Stall Pull:	165 mt @ 1 st layer
Brake Capacity:	200 mt static @ 1 st layer Remote control from aft control stand in wheelhouse
Stern Roller:	4.00 m (L) x 1.60 m (diameter); SWL 200 mt
Shark Jaws:	1 x electro-hydraulic Karmfork; SWL 300 mt
Tow Pins:	2 x electro-hydraulic with turntable top flats
Rope Reel:	1 x electro-hydraulic (Mentrade HSR-5T)
Drum Capacity:	1,000 m (L) x 56 mm (diameter) SWR

MACHINERY & PROPULSION

Main Generators:	3 x 350 kW @ 1,500 rpm / 415 V / 3 Ph / 50 Hz Caterpillar C18
Emergency Generator:	1 x 80 kW @ 1,800 rpm / 415 V / 3 Ph / 50 Hz / Caterpillar C4.4 DITA
Bow Thruster:	1 x 325 kW electric-driven (Kawasaki KT -55B3) tunnel type (CPP); 6 t thrust
Steering Gear:	2 x Kobelt: 4Tm 35 deg
Propulsion:	2 x CPP in Kort Nozzles ZF
Rudders:	2 x high performance streamline Hi-Lift

NAVIGATION & COMMUNICATION EQUIPMENT

Radars:	1 x Furuno FR2115 1 x Furuno FR1510
Main Radio:	2 x Furuno FM 8800S
Inmarsat C:	Furuno Felcom 15 & Felcom 15SSAS
GPS:	1 x Furuno GP90
Autopilot:	1 x Anschutz Pilotstar D
Gyro:	1 x Anschutz Standard 22

TECHNICAL DATA

PERFORMANCE

Bollard Pull:	66.5 mt
Max. Speed:	13 knots
Economical Speed:	11 knots
Consumption per Day:	11 m ³ / 24 h @ economical speed

ACCOMMODATION

Total Capacity:	Crew – 16, Passengers – 26
Berths:	42 (4 x 1 berth cabins, 3 x 2 berth cabins, 8 x 4 berth cabins, all fully air conditioned)
Hospital:	1 x 1 berth

FIRE FIGHTING & ANTI-POLLUTION EQUIPMENT

External:

FIFI Sytem:	Class 1 with water curtain all round
Fire Pump:	2 x 1,500 m ³ / h @ 14 bar, FFS SFP250 x 350 driven by front PTO of M / E
Monitors:	Water / Foam 1 x 300 – 1,200 m ³ / h FFS1200-300 Water 1 x 1,200 m ³ / h FFS1200LP
Oil Dispersant System:	2 x 6 m booms c / w 6 Nozzles each

Internal:

Emergency Fire Pump:	1 x 35 m ³ / h @ 50 m head
BA Recharging Comp	
CO ₂ System in Engine Room	
Fire Detection & Alarm System in Living Spaces & Engine Room	

CONTINGENCY EQUIPMENT

Rescue Boats:	1 x 13 men NOREQ-FRB 650 equipment 1 pc water jet engine 212 HP (BUKH + STEYR SOLAS 236)
Life Rafts:	6 x 25 men SOLAS approved type
Oily Water Separator:	1 x 1 m ³ / h c / w 15 ppm alarm
Water Maker:	1 x 5 m ³ / day Reverse Osmosis
Sewage Treatment Plant:	1 x 50 men

OTHER INFORMATION

DP1 System



Constanta Port, Berth 34, 900900, Constanta, Romania

Tel.: +40 24 155 5255 • Fax: +40 24 155 5257

www.gspholding.com