

**GSP Neptun focus**

**Relevant missions:**

- offshore construction platform installation
- offshore rebuilding and removal
- bridge building
- refloat ops
- decommissioning ops

Lifting height 76.00 m



Lifting speed  
/load 1.8 m/min  
/unload 3.6 m/min

1800 T capacity

GT 6,557 T

Accommodation: nine persons

Length (L.O.A.) 83m  
Width 36m

**GENERAL**

Classification Bureau Veritas | ✘ HULL Pontoon Crane  
Unrestricted Navigation ✘ ALM  
Upgraded: Santierul Naval Constanta / 2010  
Flag: Malta  
Port of Registry: Valletta



**PERFORMANCE**

Lifting Capacity: 1,800 tons  
Lifting Speed, Load: 1.8 m / min.  
Lifting Speed, Unload: 3.6 m / min.  
Main Hooks Lifting Height: 72.00 m

**ACCOMMODATION**

Total Capacity: 16 persons

**MAIN DIMENSIONS**

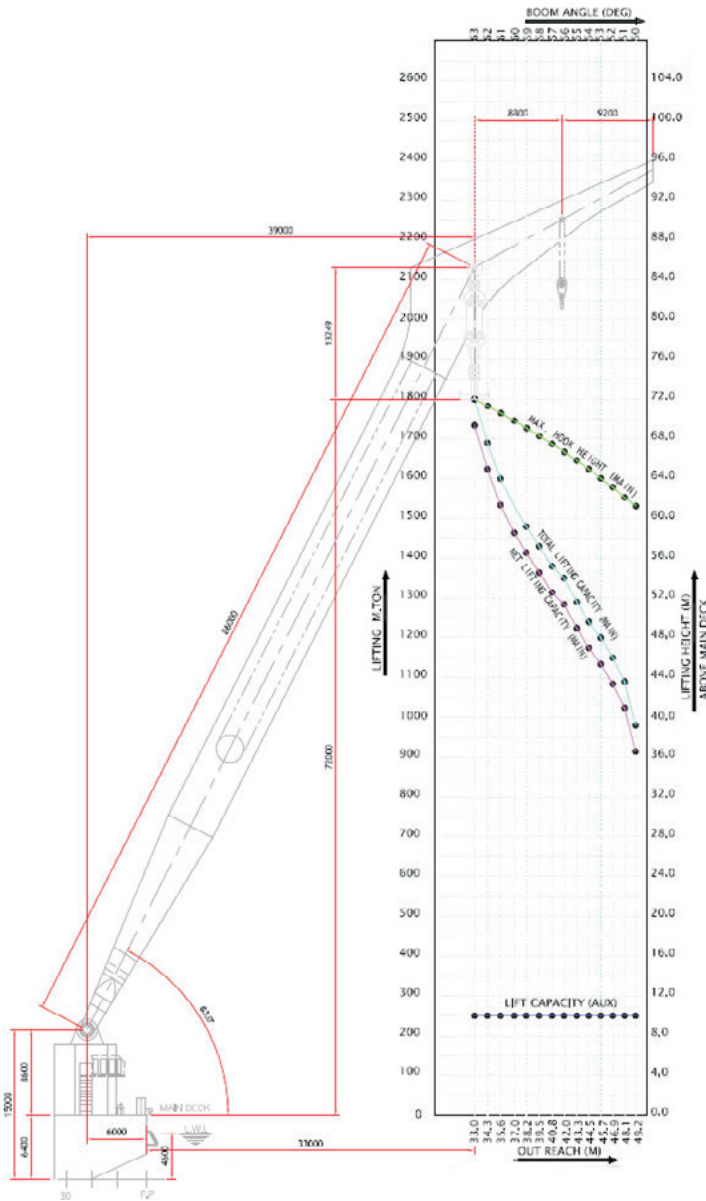
L.O.A: 83 m  
LBP: 79,680 m  
Breadth: 44 m  
Depth: 6.29 m  
Gross Tonnage: 7,502 tons  
Ballast Tank: 6,527.60 m

**LIFE SAVING & FIRE ESTINGUISHER ENDOWMENT**

For 16 persons

## GENERAL NOTES

1. Lift chart valid for 5" operatic trim & 4" roll (including static and dynamic), Hs < 1,5 m.
2. 10 % dynamic amplification factor on live load is recommended for all offshore lift.
3. Lifts near the lifting capacity shall be engineered lift.
4. Net lifting capacity is capacity after deducting main block & sheave weight (66 mt).



BOOM ANGLE (degree)	TOTAL LIFTING CAPACITY (mt)	HEIGHT (m)	OUT REACH (m)	AUX. LIFTING (mt)	TOTAL NET LIFTING CAPACITY (mt)
63	1,800	72.0	33.0	250	1,734
62	1,690	71.3	34.3	250	1,624
61	1,600	70.5	35.6	250	1,534
60	1,530	69.8	37.0	250	1,464
59	1,480	69.0	38.2	250	1,414
58	1,430	68.3	39.5	250	1,364
57	1,380	67.5	40.8	250	1,314
56	1,350	66.6	42.0	250	1,284
55	1,290	65.8	43.3	250	1,224
54	1,240	64.9	44.5	250	1,174
53	1,200	64.0	45.7	250	1,134
52	1,150	63.1	46.9	250	1,084
51	1,090	62.1	48.1	250	1,024

## LIFTING LOAD CAPACITY

BOOM ANGLE	63	62	61	60	59	58	57	56	55	54	53	52	51	50
LIFTING TONS	1,800	1,690	1,600	1,530	1,480	1,430	1,380	1,350	1,290	1,240	1,200	1,150	1,090	980
HEIGHT	72.0	72.0	70.5	69.8	69.0	68.3	67.4	66.6	65.8	64.9	64.0	63.1	62.2	61.2
OUT REACH	33.0	34.3	35.6	37.0	38.2	39.5	40.8	42.0	43.3	44.5	45.7	46.9	48.1	49.2



## MACHINERY AND PROPULSION

<b>Main Engines:</b> (Hydraulic Machinery System)	Diesel Engine for Hydraulic Power Unit Driven - Detroit Diesel, Model 9162 - 7301 (16 V - 149T1), capacity - 1,280 HP x 1,800 rpm, 3 sets
<b>Aux. Engines:</b>	Diesel, 2 sets, Type D2366t / 4 Cycle, capacity 227 PS x 1,800 rpm
<b>Generator:</b>	2 sets, Capacity AC 445 X 185 kVA x 60 Hz, Type Brushless / SelfExciting
<b>Air Compressor:</b>	1 set, single stage / air cooled, capacity 400 l / min. x 9.9 kg / cm <sup>3</sup> x 3.7 kW
<b>Ballast Pump:</b>	2 sets, type DB250VID2, capacity 450 m <sup>3</sup> / HR x 15 m x 30 kW
<b>Air Conditioner:</b>	For crew space and for the crane's control room

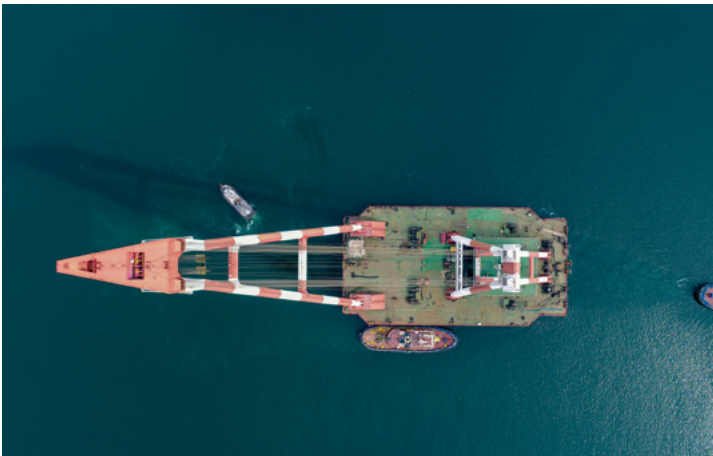
## MACHINERY AND PROPULSION

Public Addressor: auto telephone exchange (15 lines), 1 set
Common battery telephone (3 lines), 1 set
Aerial system (radio & TV antenna), 1 set
Fire & general alarm system, 1 set
Portable telephone system, 1set
VHF radio telephone system, 1 set
CCTV camera system (in the crane's control room)
Wind Indicator, 1 set
Main Radio, Echosounder, AIS, NAVTEX, GPS

## DECK MACHINERY:

### CRANE / MOORING & ANCHOR SYSTEM

Pipe Jib Luffing Type Boom (2,500 f x 5,000 f x 86,000 m): 1 set Gate Post Type
Back Tower: 1 set



### LUFFING WINCH: 2 sets

Capacity:	62 t x 16 m / min
Wire Spec.:	63 Ø x 2,520 m

### MAIN HOISTING WINCH (Main Hook 900 t): 2 sets

Capacity:	30 t / 15 t x 26 m / 52 m / min.
Wire Spec.:	46 Ø x 3,400 m

### AUX. HOISTING WINCH (Aux. Hook 250 t): 1 set

Capacity:	18.4 t / 6.4 t x 24 m / 48 m / min.
Wire Spec.:	42 Ø x 1,800 m

### GENERAL SERVICE WINCH: 1 set

Capacity:	13 t x 15 m / min.
Wire Spec.:	26 Ø x 500 m

### MOORING WINCH (outside): 2 sets

Capacity:	25t / 9.3 t x 26 m / 40 m / min.
Wire Spec.:	42 Ø x 580 m

### MOORING WINCH (inside): 2 sets

Capacity:	25t / 9.3 t x 26 m / 40 m / min.
Wire Spec.:	32 Ø x 250 m

### ANCHOR WINDLASS: 1 set

Capacity:	18 t x 10 m / min.
Anchor:	4,930 t 2 sets
Anchor Chain:	62 mm (grade 2) x 550 m

### FWD ANCHOR WINCH: 2 sets

Capacity:	15 t / 7.5 t x 26.6 m / 40 m / min.
Anchor:	3.54 t
Anchor Chain:	46 mm (grade 2), 30 m with wire rope 42 Ø x 500 m

### AFT ANCHOR WINCH: 2 sets

Capacity:	32 t / 12 t x 20 m / 40 m / min.
Anchor:	6.45 t
Anchor Chain:	58 mm (grade 2) 30 m with wire rope 46 Ø x 500 m