



GENERAL DESCRIPTION

Rig type:	Four legs, self elevating unit, cantilever type
Design:	Sonnat Offshore Company
Builder:	Galați Shipyard, Romania
Year built:	1984, rebuilt in 2003
Classification:	ABS
Flag:	Panama
Accommodation:	95 + 2 Hospital
Max. Drill Depth:	20,000 ft
Max. Water Depth:	300 ft (91 m)
Helideck:	80 x 80 ft, rated for PUMA SA 330 B
Operating Conditions:	Wave: 30 ft @ 12 sec; Wind: 50 knots; Surface Current: 2 knots
Storm Conditions:	Wave: 39 ft @ 10 sec; Wind: 86 knots; Surface Current: 2 knots

VESSEL DIMENSIONS

Length:	172 ft / 52.42 m
Breadth:	134 ft / 40.84 m
Depth:	21 ft / 6.40 m
Ocean Transit Draft:	32 ft / 9.75 m
VDL – Operating:	2,200 st / 2,000 mt

STORAGE CAPACITIES

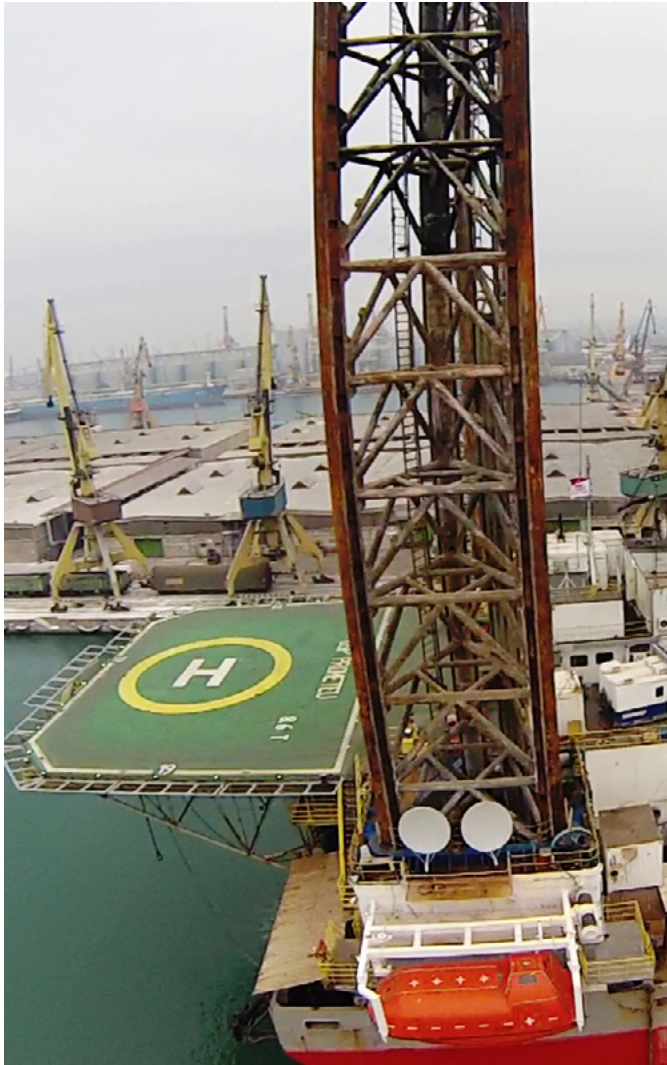
Liquid Mud:	1,880 bbls / 10,555 cu ft / 299 m ³
Drill Water:	3,302 bbls / 18,539 cu ft / 525 m ³
Potable Water:	1,272 bbls / 7,142 cu ft / 202.3 m ³
Fuel Oil:	1,640 bbls / 9,208 cu ft / 260.8 m ³
Bulk Mud:	4,620 cuft / 131 m ³
Bulk Cement:	4,620 cuft / 131 m ³
Sack Material:	1,000 sac

DRILLING EQUIPMENT

Derrick:	Upetrom, 144 ft x 45 ft x 30 ft; 705 kips static hook load
Drawworks:	Upetrom TFM-38E, 2,300 HP
Top Drive:	NOV, TDS 11 SA – 500 tons
Driller's Cabin:	Double Chairs, X-Com Sense EDM
Rotary:	Upetrom, MRL-375, 37 ½ in opening, independent drive manual
Pipe Handling:	
Mud Pumps:	3 x triplex 1,600 HP each 7500 PSI WP
Shale Shakers:	4 x Mongoose Swaco, PT Dual Motions
Desilter	1 x Swaco, 16 cones, 1,000 gpm
Mud Cleaner:	2 x triplex 1,600 HP x 5,000 PSI WP
BOP:	1 x 13 - 5 / 8 in 5 K annular, 1 x 13 - 5 / 8 in 10 K single, 1 x 13 - 5 / 8 in 10 K double
Control System:	CPC Koomey type 80 06/S82-3761-4335, 3,000 psi
Choke & Kill:	1 x 3 in x 10 K choke manifold with 1 x 3 - 1 / 16 in x 10 K remote control chokes 1 x 3 - 1 / 16 in x 10 K manual choke
Cementing:	Schlumberger Cementing Unit (Third Party)

MOORING EQUIPMENT

Winches:	2 ea x 20 to, B type, electric drive
Wire / Chain:	1 ¼ in x 300 m
Anchors:	2 x 4.5 to Hall



MACHINERY

Main Power:	5 x Caterpillar 3512 DITA, 8,430 HP total, 600 V, AC
Emergency Power:	1 x Caterpillar C-18, 587 HP, 400 V, AC
Power Distribution:	9 x Siemens SIMOREG DC Master 6 RA 7093-4 KS 22-0-2, 600 V
Deck Cranes:	2 x AmClyde 10000 x 70 ft, 40 mt @ 14.4 ft 1 x AmClyde 10000 LD x 100 ft, 25 mt @ 18.7 ft

JACK-UP SPECIFICATIONS

Legs:	Triangle; 4 x 399 ft usable below hull = 352.75 ft
Leg Spacing:	Longitudinal 126 ft; Transverse 109 ft
Spud Cans:	38.83 ft diameter x 8.11 ft height
Jacking System:	Orion Class Pin & Hole
Cantilever / Slot:	Cantilever 55 ft x 20 ft

