



CLASSIFICATION

✕ A1, Towing Vessel, Fire Fighting Vessel Class 1, Offshore Support Vessel, ©, ✕ AMS, ✕ DPS-2

CLASSIFICATION SOCIETY:

Build Location: Jaya Shipyard
Flag: Panama
Delivered: 2006
Type: AHTS
Design: 70 m Anchor Handling Supply Vessel

DIMENSIONS

L.O.A.: 70.05 m
LPP: 66,915 m
Breadth Moulded: 14,950 m
Draft: 5.00 m
DWT: 1,650 t
GRT: 1,951 t
Net Tonnage: 585 t

VESSEL CAPABILITIES

CARGO CAPACITIES

Deck Area: 490 m
Deck Cargo: 750 t
Deck Load: 7.5 t / m²
Fuel: 1729.75 cubm
Potable Water: 446.41 cubm
Drill Water: 276.36 cubm
Liquid Mud: 644 cubm
Dry Bulk: 200 cubm

DECK MACHINERY / MOORING

Tugger Winches: 2 x 12 t
Capstans: 2 x 5.2 t
Deck Cranes: 1 x 2.2 t @ 12.2 m
Windlass: 1 x 17.3 t
Anchor: 2 x 1,590 kg, D-14 type
Chain: 880 m, 38 mm, Grade U2

PROPULSION AND POWER

Main Engines: 2 x 2,925 kW @ 1,000 rpm, Wartsila 9L26
Aux. Engines: 2 x 410 kW @ 1,800 rpm, Caterpillar 3408 DITA
Emergency Generator: 1 x 87 kW @ 1,800 rpm, Perkins
Shaft Generators: 2 x 1,800 kW @ 1,800 rpm, Leroy-Somer
Main Propellers: 2 x Wartsila CPP, 4 blades/ 3,000 mm
Bow Thruster: 2 x Kawasaki, 8 t thrust
Stern Thruster: 1 x Kawasaki, 8 t thrust
Rudders: 2

DISCHARGE CAPACITIES

Fuel: 1 x 100 cubm / h @ 7.5 bar
Potable Water: 1 x 100 cubm / h @ 7.5 bar
Drill Water: 1 x 100 cubm / h @ 7.5 bar
Liquid Mud: 3 x 100 cubm / hr @ 7.5 bar
Dry Bulk Compressors: 2 x 15 cubm / h @ 2.9 bar

ACCOMODATION

Total Capacity: 42 persons
Cabins: 4 cabins x 1 person
3 cabins x 2 persons
8 cabins x 4 persons
Hospital: Fully equipped
Lounges: 1

CONTINGENCY EQUIPMENT

Fast Rescue Craft: 1 x outboard motor, 40 HP
Fire Fighting: FI-FI 1, 1,623 cubm / h @ 12.9 bar
Rescue Zones: 1 starboard, 1 portside

OTHER INFORMATION

DP2: Kongsberg

The vessel is designed to fulfil the following duties:

- Supply and transport of equipment between offshore platforms and installations (such as brine, cargo containers, cement, drill water, fresh water, fuel oil, liquid mud, methanol, pipes etc)

PERFORMANCE

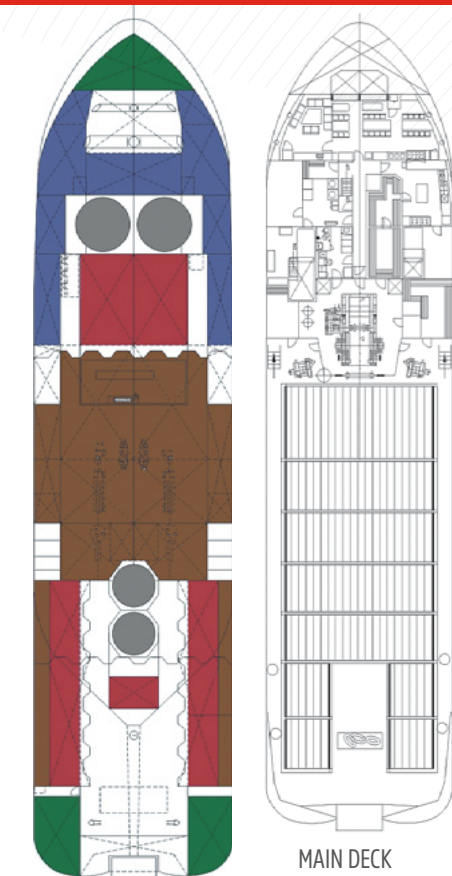
Bollard Pull:	91.2 t
Max. Speed:	15 knots
Consumption per Day:	30 mts @ max. speed 12 mts @ service speed 10 mts @ economic speed

TOWING / ANCHOR HANDLING EQUIPMENT

Winch Type:	1 x Brattvaag, double drum, waterfall
AHT Winch Pull:	200 t
AHT Winch Break:	250 t
Tow Drum Capacity:	1,400 m x 58 mm
Tow Line:	1,200 m x 58 mm
Working Drums Capacities:	1,400 m x 58 mm
Storage Drums Capacities:	1,400 m x 58 mm
Spare Tow Line:	1,200 m x 58 mm
Towing Pins Triplex:	2 x 160 t
Stern Roller:	3,500 mm length, 1,600 mm diameter, 250 t SWL

NAVIGATION & COMMUNICATION EQUIPMENT

Radars:	1 x Furuno X-band, 1 x Furuno S-band
Main Radio:	GMDSS
Inmarsat C:	Furuno Felcom 15
GPS:	2 x Furuno
Autopilot:	Robertson
Gyro:	C-Plath

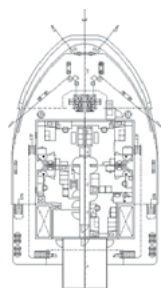


MAIN DECK

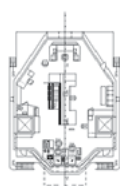
VIEW UNDER MAIN DECK



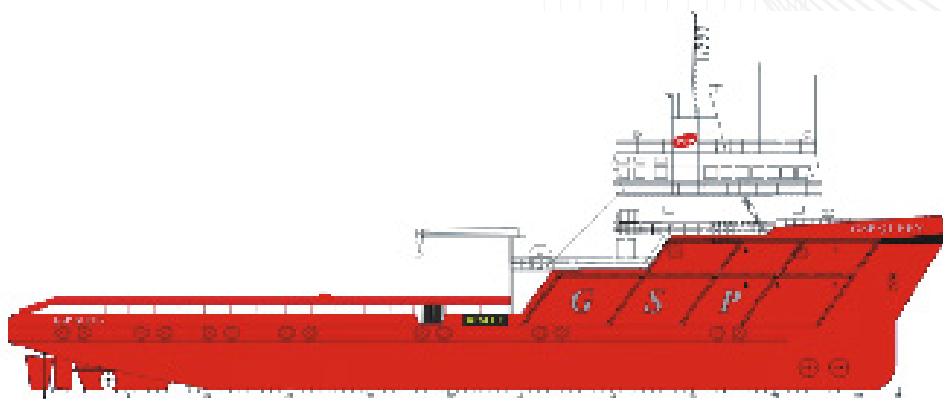
FORECASTLE DECK



UPPER FORECASTLE DECK



BRIDGE DECK



OUTBOARD PROFILE